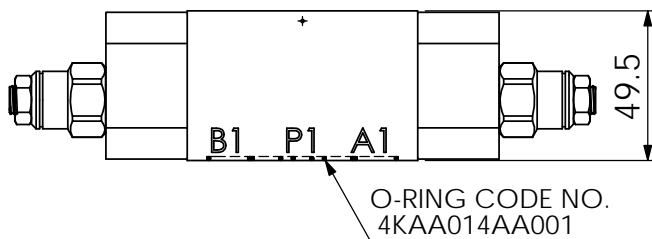
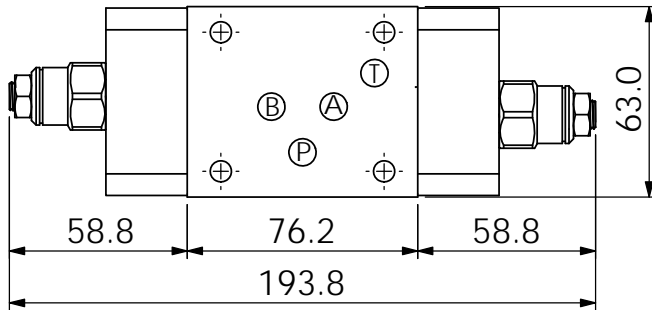
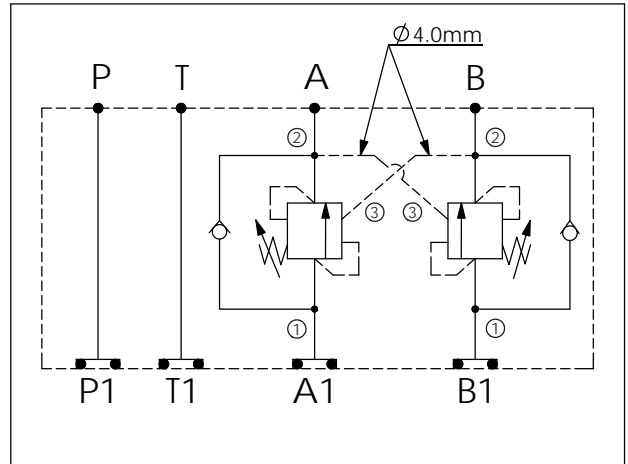
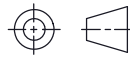


| |
|--|
| Ordering Code: MH05CDW-X-Y-Z 21 |
| Stack Height : 49.5mm |



UNIT:mm



TECHNICAL DATA

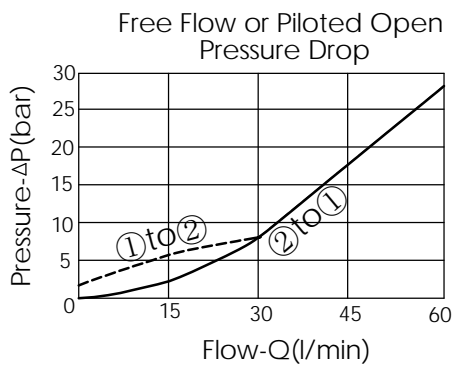
Aluminum Body Pressure Rating: 250 bar
 Ductile Iron Body Pressure Rating: 350 bar

Rated flow: 60 l/min

Cartridge Valve:
 Refer to CB11A-X-Y-Z
 * Refer to Winner Cartridge Valves Catalog.

| | |
|----------|--|
| Aluminum | 0.95 kg(WITHOUT VALVES) 1.35 kg(INCLUDE VALVES) |
|----------|--|

* If you need the special specification. Please contact us.



X SELECTION FOR A PORT CONTROL

| | |
|-------------|----------------------------|
| 11A3 | CAVITY ONLY(WITHOUT VALVE) |
| CB3H | CB11A33HL (3:1 , 280bar) |
| CB4J | CB11A34JL (4.5:1 , 350bar) |
| CB0J | CB11A30JL (10:1 , 350bar) |

Y SELECTION FOR B PORT CONTROL

| | |
|-------------|----------------------------|
| 11A3 | CAVITY ONLY(WITHOUT VALVE) |
| CB3H | CB11A33HL (3:1 , 280bar) |
| CB4J | CB11A34JL (4.5:1 , 350bar) |
| CB0J | CB11A30JL (10:1 , 350bar) |

Z BODY MATERIAL

A HIGH-STRENGTH ALUMINUM