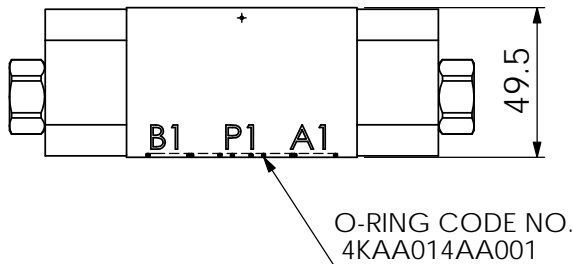
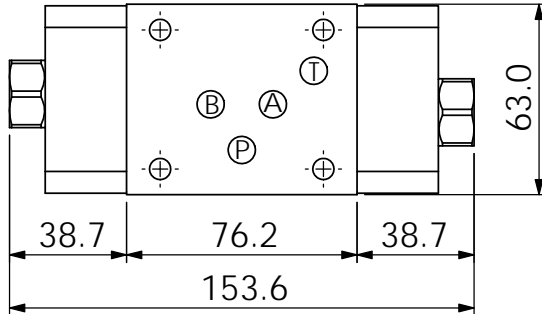
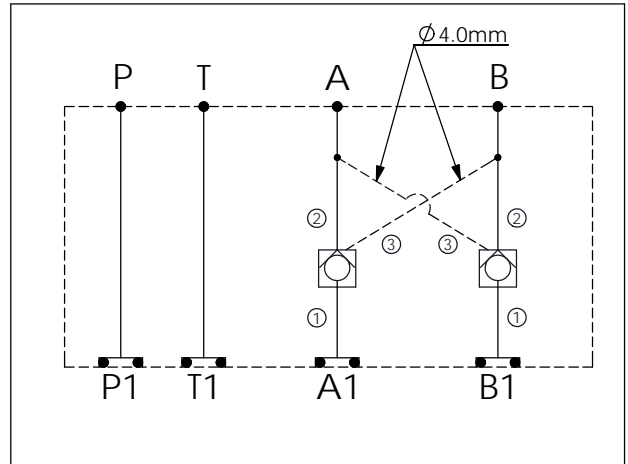
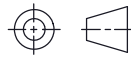


Ordering Code: MH05CDW-X-Y-Z 21
Stack Height : 49.5mm



UNIT:mm



TECHNICAL DATA

Aluminum Body Pressure Rating: 250 bar

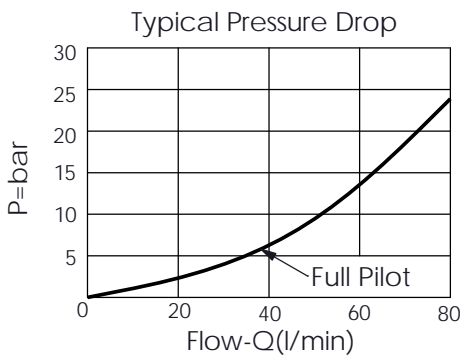
Ductile Iron Body Pressure Rating: 350 bar

Rated flow: 60 l/min

Cartridge Valve:
Refer to CO11A-X-Y-Z
* Refer to Winner Cartridge Valves Catalog.

Aluminum	0.95 kg(WITHOUT VALVES) 1.25 kg(INCLUDE VALVES)
----------	--

* If you need the special specification. Please contact us.



X SELECTION FOR A PORT CONTROL

11A3	CAVITY ONLY (WITHOUT VALVE)
CO20	CO11A3020N (60LPM,2.0bar)
CO03	CO11A3003N (60LPM,0.3bar)
CO50	CO11A3050N (60LPM,5.0bar)

Y SELECTION FOR B PORT CONTROL

11A3	CAVITY ONLY (WITHOUT VALVE)
CO20	CO11A3020N (60LPM,2.0bar)
CO03	CO11A3003N (60LPM,0.3bar)
CO50	CO11A3050N (60LPM,5.0bar)

Z BODY MATERIAL

A	HIGH-STRENGTH ALUMINUM
----------	------------------------