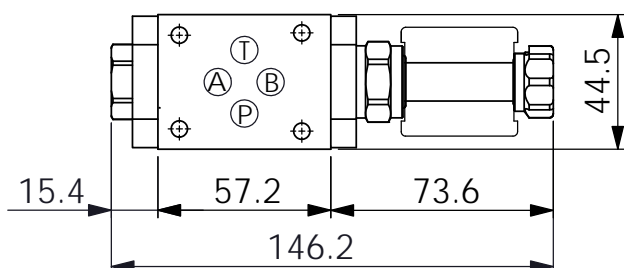


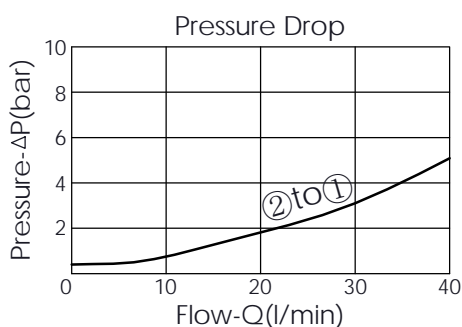
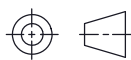
Ordering Code: **MH03EDW-X-Y-Z01**

Stack Height : 44.5mm



O-RING CODE NO.
4KAA012AA001

UNIT:mm



Y

SELECTION FOR B PORT CONTROL (REFER TO EP08W-X-Y-Z)

08W2

CAVITY ONLY(WITHOUT VALVE)

EP01

EP08W2A01N05 , 40LPM,350bar
(NORMALLY CLOSED,WITHOUT COIL)

EP02

EP08W2A02N05 , 40LPM,350bar
(NORMALLY OPEN,WITHOUT COIL)

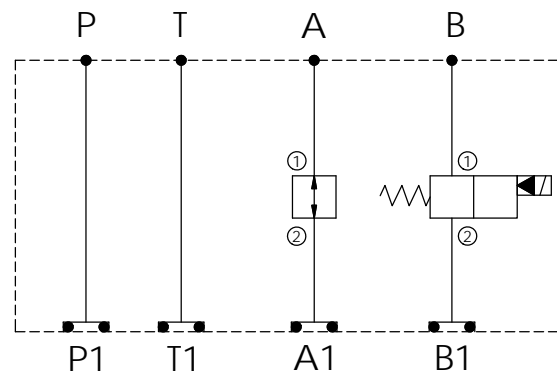
EP01M

EP08W2A01M05 , 40LPM,350bar(NORMALLY CLOSED
WITH KNOB STYLE MANUAL OVERRIDE,WITHOUT COIL)

EP02P

EP08W2A02P05 , 40LPM,350bar(NORMALLY OPEN
WITH PUSH STYLE MANUAL OVERRIDE,WITHOUT COIL)

COIL MUST BE ORDERED SEPARATELY
(REFER TO EC-04W-X-Y-Z)



TECHNICAL DATA

Aluminum Body Pressure Rating: 250 bar

Ductile Iron

Body Pressure Rating: 350 bar

Rated flow: 40 l/min

Cartridge Valve:

Refer to CP08W-X-Z

EP08W-X-Y-Z

* Refer to Winner Cartridge Valves Catalog.

Aluminum	0.35 kg(WITHOUT VALVES)
	0.54 kg(INCLUDE VALVES ,WITHOUT COIL)
Ductile Iron	0.95 kg(WITHOUT VALVES)
	1.14 kg(INCLUDE VALVES ,WITHOUT COIL)

* If you need the special specification.
Please contact us.

X

SELECTION FOR A PORT CONTROL

08W2

CAVITY ONLY(WITHOUT VALVE)

CP12

CP08W2H12(3/4"-16UNF-2B ,
PORTS 1 AND 2 OPEN)

Z

BODY MATERIAL

A

HIGH-STRENGTH ALUMINUM

S

DUCTILE IRON