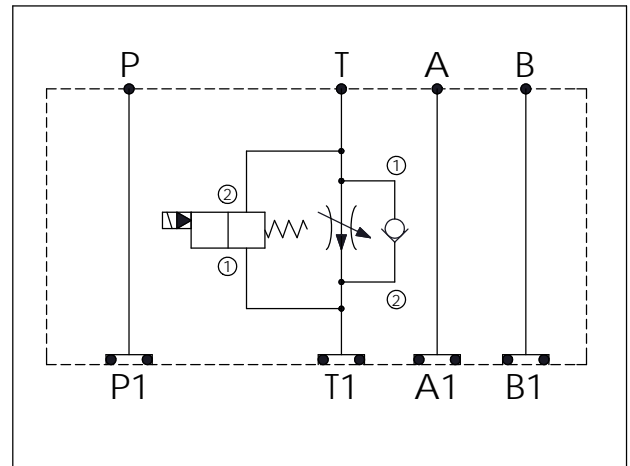


ISO 05 SANDWICH MANIFOLD

Ordering Code:	MH05FTE-X-Y-Z 01
Stack Height :	49.5mm

O-RING CODE NO.
4KAA014AA001

UNIT:mm



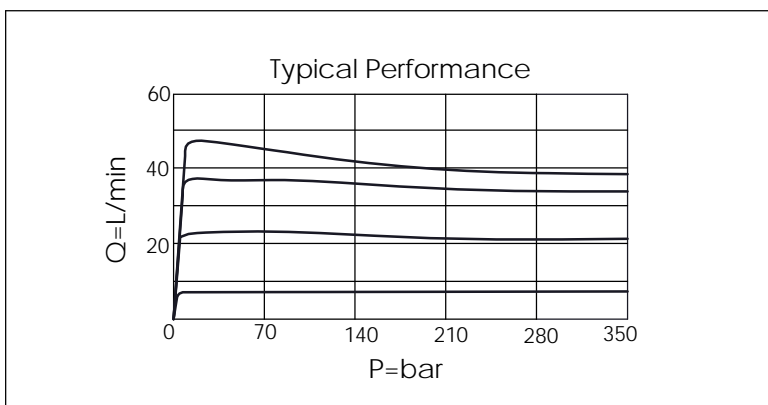
TECHNICAL DATA

Aluminum Body Pressure Rating: 250 bar
 Ductile Iron Body Pressure Rating: 350 bar
 Rated flow: 45 l/min (Pressure Compensated)

Cartridge Valve:
 Refer to FR5A-X-Y-Z
 EP12W-X-Y-Z
 * Refer to Winner Cartridge Valves Catalog.

Aluminum	0.8 kg(WITHOUT VALVES) 1.3 kg(INCLUDE VALVES ,WITHOUT COIL)
----------	--

* If you need the special specification. Please contact us.



X	SELECTION FOR FLOW CONTROL	
5A2	CAVITY ONLY(WITHOUT VALVE)	
FR0A	FR5A20AL (45 LPM , 350bar)	

Y	SELECTION FOR SOLENOID VALVES (REFER TO EP12W-X-Y-Z)	
12W2	CAVITY ONLY(WITHOUT VALVE)	
EP01	EP12W2A01N05 , 150LPM,350bar (NORMALLY CLOSED,WITHOUT COIL)	
EP02	EP12W2A02N05 , 150LPM,350bar (NORMALLY OPEN,WITHOUT COIL)	
EP01M	EP12W2A01M05 , 150LPM,350bar(NORMALLY CLOSED WITH KNOB STYLE MANUAL OVERRIDE,WITHOUT COIL)	
EP02P	EP12W2A02P05 , 150LPM,350bar(NORMALLY OPEN WITH PUSH STYLE MANUAL OVERRIDE,WITHOUT COIL)	
COIL MUST BE ORDERED SEPARATELY (REFER TO EC-04W-X-Y-Z)		

Z	BODY MATERIAL	
A	HIGH-STRENGTH ALUMINUM	