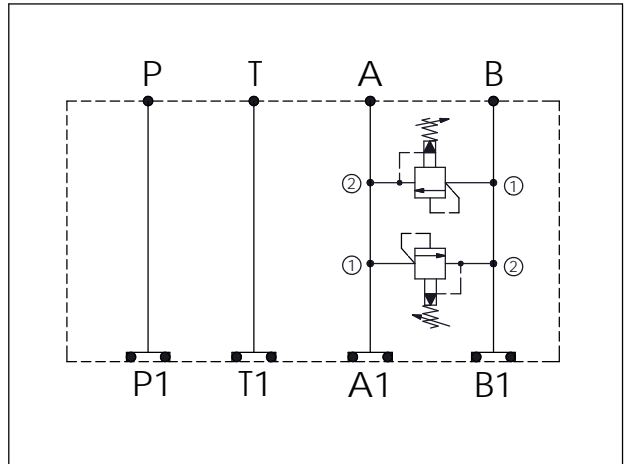


ISO 05 SANDWICH MANIFOLD

Ordering Code:	MH05RDH-X-Y-Z01
Stack Height :	49.5mm

UNIT:mm



TECHNICAL DATA

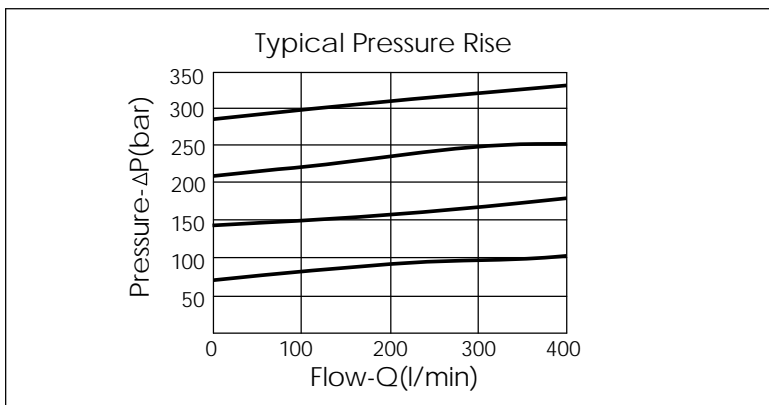
Aluminum Body Pressure Rating: 250 bar
 Ductile Iron Body Pressure Rating: 350 bar

Rated flow: 80 l/min

Cartridge Valve:
 Refer to RP3A-X-Y-Z
 * Refer to Winner Cartridge Valves Catalog.

Aluminum	0.76 kg(WITHOUT VALVES) 1.26 kg(INCLUDE VALVES)
Ductile Iron	2.25 kg(WITHOUT VALVES) 2.75 kg(INCLUDE VALVES)

* If you need the special specification. Please contact us.



X	SELECTION FOR A PORT CONTROL	
3A2	CAVITY ONLY(WITHOUT VALVE)	
RP0A	RP3A20AL (200 LPM , 7-210bar)	

Y	SELECTION FOR B PORT CONTROL	
3A2	CAVITY ONLY(WITHOUT VALVE)	
RP0A	RP3A20AL (200 LPM , 7-210bar)	

Z	BODY MATERIAL	
A	HIGH-STRENGTH ALUMINUM	
S	DUCTILE IRON	